

Rooftop Paver Layout Service



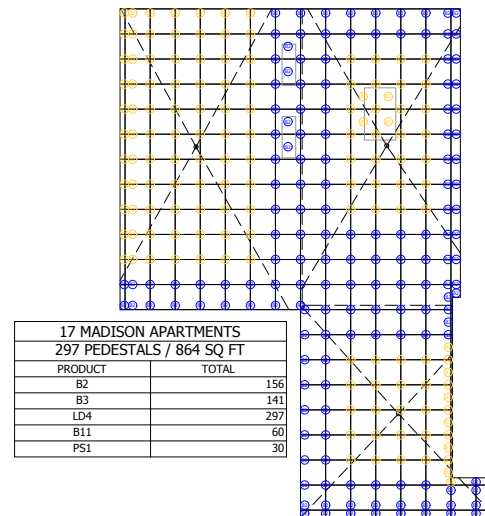
WE CAN HELP WITH YOUR PROJECT

During the bid phase of a project, Westile can provide a rough component count based on square footage. This will include paver counts and pedestal counts. Once the project is awarded, a detailed layout (example 1) can be created showing more precise pedestal counts, heights and locations. This detailed layout takes approximately 5-7 business days to complete.

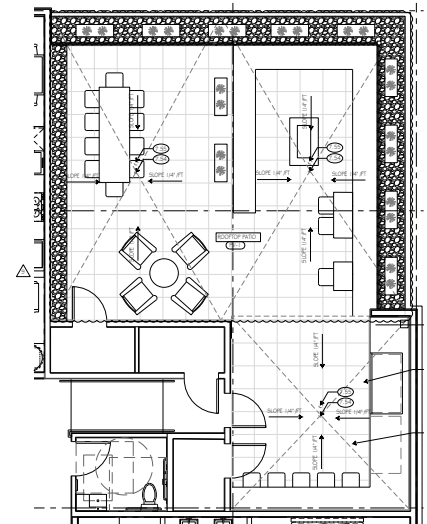
To create the detailed layout, the following information must be provided:

1. Paver type and size to be installed (i.e. Concrete, Wood or Porcelain; i.e. 24"x24")
2. Deck plan showing area (example 2)
3. Section detail (example 3)
4. Slope and drain locations (example 4)
5. Starting / threshold height (example 5)

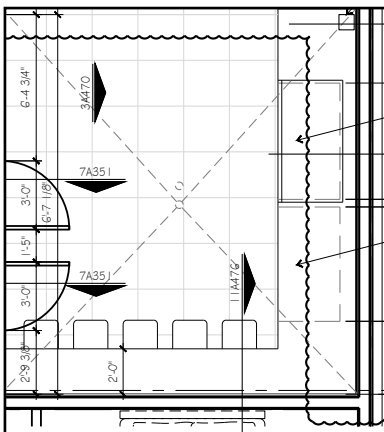
EXAMPLE 1



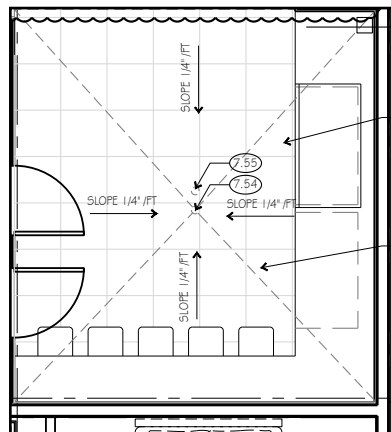
EXAMPLE 2



EXAMPLE 3



EXAMPLE 4



EXAMPLE 5

